



# Pantry Drive Checklist

## Top 10 Most Needed Items

- Frozen lasagna and other large-sized frozen meals
- Frozen meat, vegetables, and fruit
- Fresh fruit and vegetables
- Freezies/Popsicles
- Pasta sauces
- Canned beans
- Cheddar cheese blocks/sticks/slices
- Butter or margarine squares for baking
- Chocolate chips
- Ziplock storage bags (various sizes)

## Pantry

- Certified wild meat
- Keto or gluten free menu items
- Canned fruit and vegetables
- Salad Dressing
- Dijon mustard
- Mayonnaise
- Salt and pepper
- Sliced almonds
- Maple syrup
- Eggo waffles
- Vinegar
- Canola or vegetable oil
- Kraft Dinner (regular packages and individual sized)
- Instant noodles packages
- Lipton Cup-a-Soup
- Cream of chicken soup cans
- Adult and children's cereals
- Flavoured instant oatmeal packets
- Tortilla wraps: 6-inch and large size
- Taco kits

## Baking Supplies

- Cocoa
- Baking powder
- Baking soda
- Raisins/Craisins
- Rolled oats
- Coconut
- Vanilla extract
- Liquid honey
- Brown sugar
- White sugar
- Icing sugar
- Ready to spread frosting
- Muffin cups/liners
- Cake Mixes
- Muffin Mixes
- Marshmallows

## Other Supplies

- Kirkland Signature Smart Tire Home and Office Bags, 320-pack
- Corelle Winter Frost Dinnerware Set
- Sanitizing wipes
- Personal-sized hand sanitizers
- Fabric dryer sheets
- Parchment paper
- Plastic wrap
- Aluminum foil
- Aluminum foil pans: loaf size and 9"x13"

## Blankets and Slippers

- Knitted or crocheted slippers
- Quilted, knitted, or crocheted blankets

## Gift Cards (increments of \$25)

- Walmart
- Costco
- Grocery stores
- Michaels
- Gas gift cards
- Dollar stores
- Staples
- Grand & Toy
- Store gift cards appreciated as holiday and birthday gifts for children over age 12 (\$15-25 value)

## Toys\*

- Infant toys
- Toys for ages 2–8-years-old
- Toys for ages 8–12-years-old
- Toys/gifts for ages 12–18-years-old

\*At this time, we are not accepting donations of stuffed animals.

## Welcome Bag Items

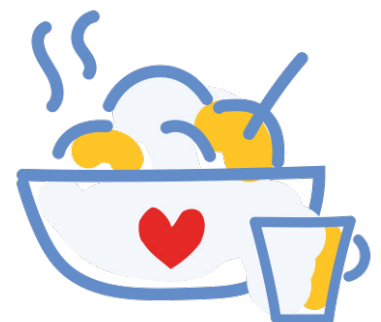
- Crossword and sudoku puzzle books
- Notepads or journals

## Smudging Supplies

- Sage, sweetgrass, and cedar

## Administrative Needs

- Printer paper, letter size
- File folders, letter size



Thank you for helping our House and Family Room programs feel like home for families in need!